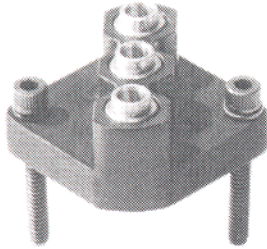


# **PARTS LIST** **ARO PNEUMATIC LOGIC CONTROL** **LOGIC FUNCTION ASSEMBLY**

**MODEL 59109**

FORM 5715  
REV. 5-85

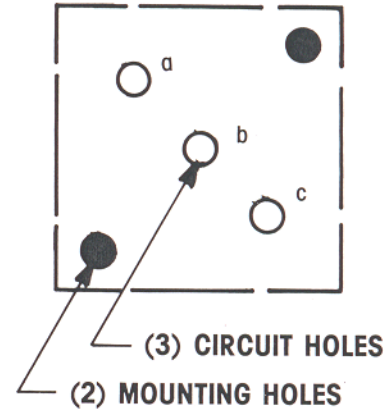
## **CIRCUIT PORTING BLOCK**



### **CIRCUIT FUNCTION**

Provides three separate input or output connections to the circuit board.

### **CIRCUIT PATTERN**



## **DESCRIPTION**

The circuit porting block is used to make connections on the circuit board. It provides one individual push-in tubing connection (for 4mm .O.D. tubing) for each of three circuit connections. The ports that are not used may be plugged with a 59462 plug. The porting block has three bottom ports which are marked on the top to correspond to the position on the base. The bottom ports connect to the circuit board and through circuit passages in the circuit module allow the required circuitry to be performed. Three 35926 seals provide sealing between the circuit base plate and the bottom ports. Two Y154-36-K screws, two Y48-6-K lock washers, and two Y225-3-K nuts are used to attach the porting block to the circuit board. Torque nuts to  $16 \pm 1$  in.-lb. in approximately 5 in.-lb. increments.

## **PARTS LIST**

